

# SATA Product and Service Update II/2023

New products, product modifications and product information



## Spray Guns / Spray Gun Accessories

|    | <b>A. New products</b>     | <b>Description</b>  | <b>Available as of</b> | <b>Details</b> |
|----|----------------------------|---------------------|------------------------|----------------|
| 1. | SATA quick coupling nipple | Further versions    | As of now              | Page 3         |
| 2. | SATA QMR                   | Further versions    | As of January 2024     | Page 4-5       |
| 3. | SATAjet K 1800 spray mix   | Further spare parts | As of September 2023   | Page 6         |

|    | <b>C. Produkt information</b> | <b>Description</b> | <b>Available as of</b> | <b>Details</b> |
|----|-------------------------------|--------------------|------------------------|----------------|
| 1. | Maintenance kits              | Product expansion  | As of now              | Page 7         |

# SATA Product and Service Update II/2023



## New Product

### ■ 1. Quick coupling nipple – additional, smaller packaging unit 2 pieces

- Available: As of now
- In addition to the existing five-pack (#6981), the two-pack (#1188912) is now available.

Previously  
Further existing  
accessory



**NEW**  
**additional  
accessory**



| Art. No.                          | Description   |
|-----------------------------------|---|
| 1188912                           | SATA quick coupling nipple G 1/4" (female thread) [(pack of 2 pieces)]    |
| <b>Already existing accessory</b> |   |
| 6981                              | SATA quick coupling nipple G 1/4" (female thread) (packing unit 5 pieces) |

## New Product

### ■ 2. SATA QMR (Quick Material Regulator) – Further versions

- Available: As of January 2024
- Expansion of existing QMR range for SATAjet X 5500 and 5000 due to popular demand
- **Also available: QMR for the paint spray gun series**
  1. SATAjet 100 B F, 1000 B und 1500 B
  2. SATAminijet 4400 B
  3. Existing QMR for SATAjet X 5500 and 5000 additionally in packaging unit 1



## New Product

| Art. No.            | Description   |
|---------------------|---|
| 1185596             | SATA QMR, Quick Material Regulator (pack of 1 piece) [for SATAjet 100, 1000 and jet 1500] |
| 1185603             | SATA QMR, Quick Material Regulator (pack of 1 piece) [for SATAminijet 4400]               |
| 1186213             | SATA QMR, Quick Material Regulator (pack of 1 piece) [for SATAjet 5000 series]            |
| <b>Existing QMR</b> |   |
| 1162817             | SATA QMR, Quick Material Regulator (pack of 2 pieces) [for SATAjet 5000 series]           |



## Features of the SATA QMR

- The position of the material quantity regulation and consequently the material flow rate can be adjusted at the push of a button
- Helps the user set the required material flow rate quickly and in reproducible fashion
- Retrofitting, maintenance-free and easy to Operate
- Suitable for application processes which require specific, reduced material flow rates on a regular basis
- Release function: Simply by pulling, the material flow regulation is being fully released again

## New Product

### ■ 3. SATAjet K 1800 spray mix – Further spare parts

- Available: As of September 2023
- Previously: Pre-nozzle, complete (pre-nozzle, air distribution ring, seal) (Fig.1) available
- NEW: Seal (Fig.2) and air distribution ring (Fig.3) additionally available as spare parts

| Art. No.                          | Description   |
|-----------------------------------|---|
| 1181651                           | Pre-nozzle packing [SATAjet K 1800 spray mix]                   |
| 1181669                           | Air distribution ring for pre-nozzle [SATAjet K 1800 spray mix] |
| <b>Already existing accessory</b> |   |
| 1134832                           | Pre-nozzle cpl. [for SATAjet K 1800 spray mix]                  |

Previously  
Further existing  
accessory



Fig. 1

**NEW**  
additional  
accessories

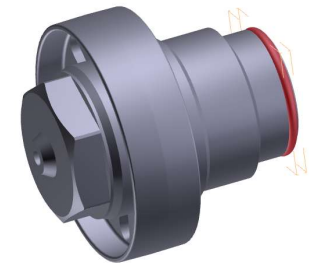


Fig. 2

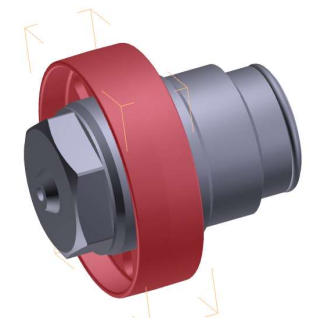


Fig. 3



## Product Expansion

### ■ 1. Maintenance kits

- Reduced version of the existing repair kits
- Scope of delivery: see table on the right
- Available: As of now

| Content<br>Standard Rep. Sets   | SATAjet<br>X5500<br>#1173286 | SATAjet 5000 B<br>#1050674 | SATAjet 4000 B<br>#1047837 | SATAjet 1500 B<br>#1173278 | SATAjet 100<br>/ jet 1000<br>#1173260 |
|---|------------------------------|----------------------------|----------------------------|----------------------------|---------------------------------------|
| Paint needle packing<br>(Packing screw , Pressure spring, seal<br>for paint needle) | ✘                            | ✘                          | ✘                          | ✘                          | ✘                                     |
| Sealing element for fluid tip   | ✘                            | ✘                          | ✘                          | ✘                          | ✘                                     |
| Air piston rod  | ✘                            | ✘                          | ✘                          | ✘                          | ✘                                     |
| Seal retainer   | ✘                            | ✘                          | ✘                          | ✘                          | ✘                                     |
| O-ring for spindle  | ✘                            | ✘                          | ✘                          | ✘                          | ✘                                     |
| Air piston head   | ✘                            | ✘                          | ✘                          | ✘                          | ✘                                     |
| Gasket for paint needle   | ✘                            | ✘                          | ✘                          | ✘                          | ✘                                     |
| Air distribution ring +<br>Extraction tool  | —                            | ✘                          | ✘                          | ✘                          | ✘                                     |
| Pressure spring for paint<br>needle packing and air piston                          | —                            | —                          | —                          | —                          | —                                     |
| Air micrometer  | —                            | —                          | —                          | —                          | —                                     |
| Control knob with screw   | —                            | —                          | —                          | —                          | —                                     |
| Trigger sleeve kit  | —                            | —                          | —                          | —                          | —                                     |
| Adjustment screw for air<br>micrometer  | —                            | —                          | —                          | —                          | —                                     |
| Cleaning brush  | —                            | —                          | —                          | —                          | —                                     |

✘ Included in the maintenance kit

— Not included in the maintenance set

---

Register today for the SATA e-mail newsletter at  
[www.sata.com](http://www.sata.com).

In order to be informed conveniently and  
comprehensively by SATA about new products,  
practical reports, application tips, etc.